

Silica Compliance Flowchart

Action Level (AL):

25 $\mu\text{g}/\text{m}^3$, 8-Hour time-weighted average (TWA)

Permissible Exposure Limit (PEL):

50 $\mu\text{g}/\text{m}^3$, 8-Hour TWA

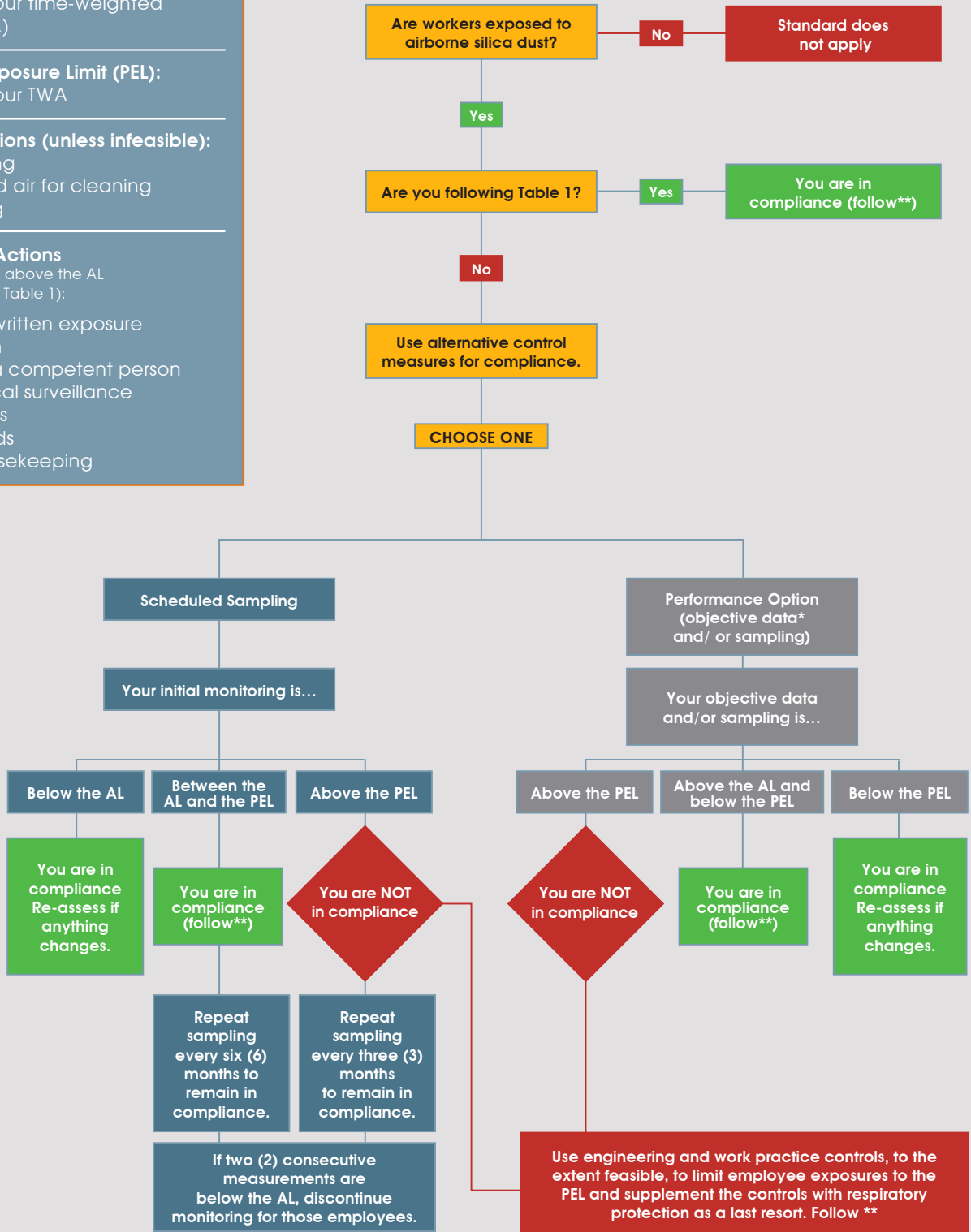
Prohibited Actions (unless infeasible):

1. Dry sweeping
2. Compressed air for cleaning
3. Dry brushing

**Mandatory Actions

(when exposure is above the AL or when following Table 1):

1. Establish a written exposure control plan
2. Designate a competent person
3. Offer medical surveillance
4. Train workers
5. Keep records
6. Restrict housekeeping



*Objective Data: Information from industry-wide surveys demonstrating employee exposure to respirable crystalline silica associated with a process, task or activity. The data must reflect workplace conditions resembling work practices and environmental conditions in the employer's current operations.